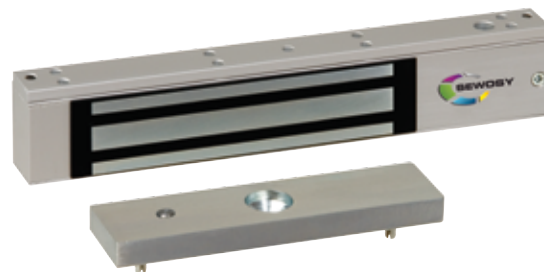


VELMAG™ SURFACE ELECTROMAGNETIC LOCKS

150 DaN

- Satin aluminium housing
- Connection by screw terminal block
- Locked / unlocked status by HALL sensor (CTC model)
- Anti-remnance device by ejector



EF150

CHARACTERISTICS

Dimensions H x W x D	Electromagnet	39,70 x 210 x 22,10 mm	
	Armature plate	33 x 130 x 11 mm - M8	
	12-24V DC		480-240 mA
	-10°C +55°C		42
	24V DC-2 A		150*

* Maximal theoretical holding forces, for an implementation meeting the optimum laying conditions

EF150 Surface electromagnetic lock 150 DaN 12-24V DC 1,2 kg

EF150CTC Surface electromagnetic lock 150 DaN 12-24V DC contact + LED 1,2 kg

Customs code
83014019

