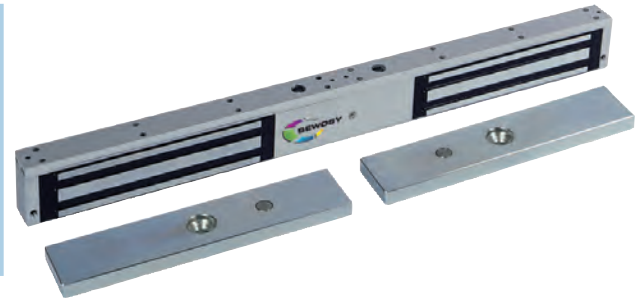


# VELMAG™ SURFACE DOUBLE ELECTROMAGNETIC LOCKS

## NF S 61-937 COMPLIANT

300 DaN

- Suitable for double leaf doors
- Integrated anti-disassemble device
- Satin aluminium housing
- Connection by screw terminal block
- Locked / unlocked status by HALL sensor (CTC model)
- Anti-remanence device by ejector



EF300-2

### CHARACTERISTICS

Dimensions H x W x D	Electromagnet	48,40 x 500 x 25,85 mm	
	Armature plate	38 x 180 x 11 mm - M8	
	12-24V DC		960-480 mA
	-10°C +55°C		42
	24V DC-2 A		2 x 300*

\* Maximal theoretical holding forces, for an implementation meeting the optimum laying conditions

PV N° 13/2211/RG1 - LCPP

N° P-120001624.15

EF300-2

Surface double electromagnetic lock 2 x 300 DaN 12-24V DC

4 kg

EF300-2CTC

Surface double electromagnetic lock 2 x 300 DaN 12-24V DC contact + LED

4 kg

Customs code  
83014019

