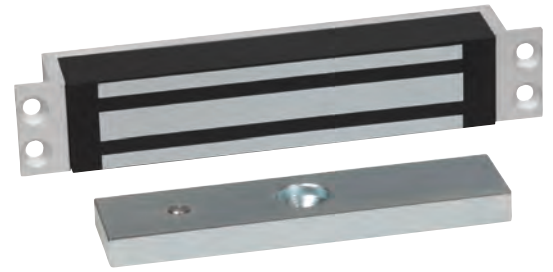


VELMAG™ MORTISE ELECTROMAGNETIC LOCKS

150 DaN

- Connection by removable screw terminal block
- Locked / unlocked status sensor by REED contact (CTC model)
- Anti-remanence device by ejector

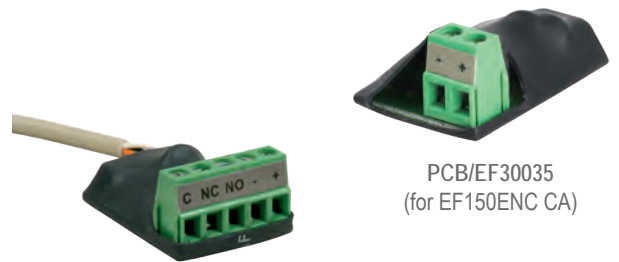


EF150ENC CA

CHARACTERISTICS

Dimensions H x W x D	Electromagnet Armature plate	31,8 x 173 x 25,70 mm 33 x 130 x 11 mm - M8
V DC	12-24V DC	mA DC 480-240 mA
°C	-10°C +55°C	IP 42
V/A	24V DC-1 A	DaN 150*

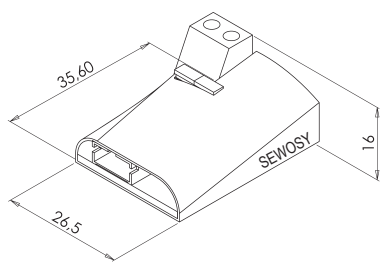
* Maximal theoretical holding forces, for an implementation meeting the optimum laying conditions



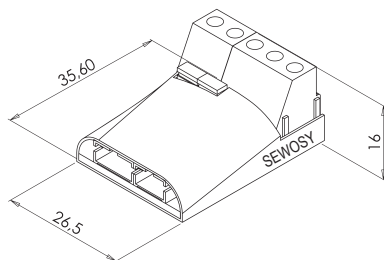
PCB/EF30035CTC
(for EF150ENCCTC CA)

EF150ENC CA	Mortise electromagnetic lock 150 DaN 12-24V DC	1,3 kg
EF150ENCCTC CA	Mortise electromagnetic lock 150 DaN 12-24V DC + contact	1,3 kg

Customs code
83014019



PCB for EF150ENC CA



PCB for EF150ENCCTC CA

